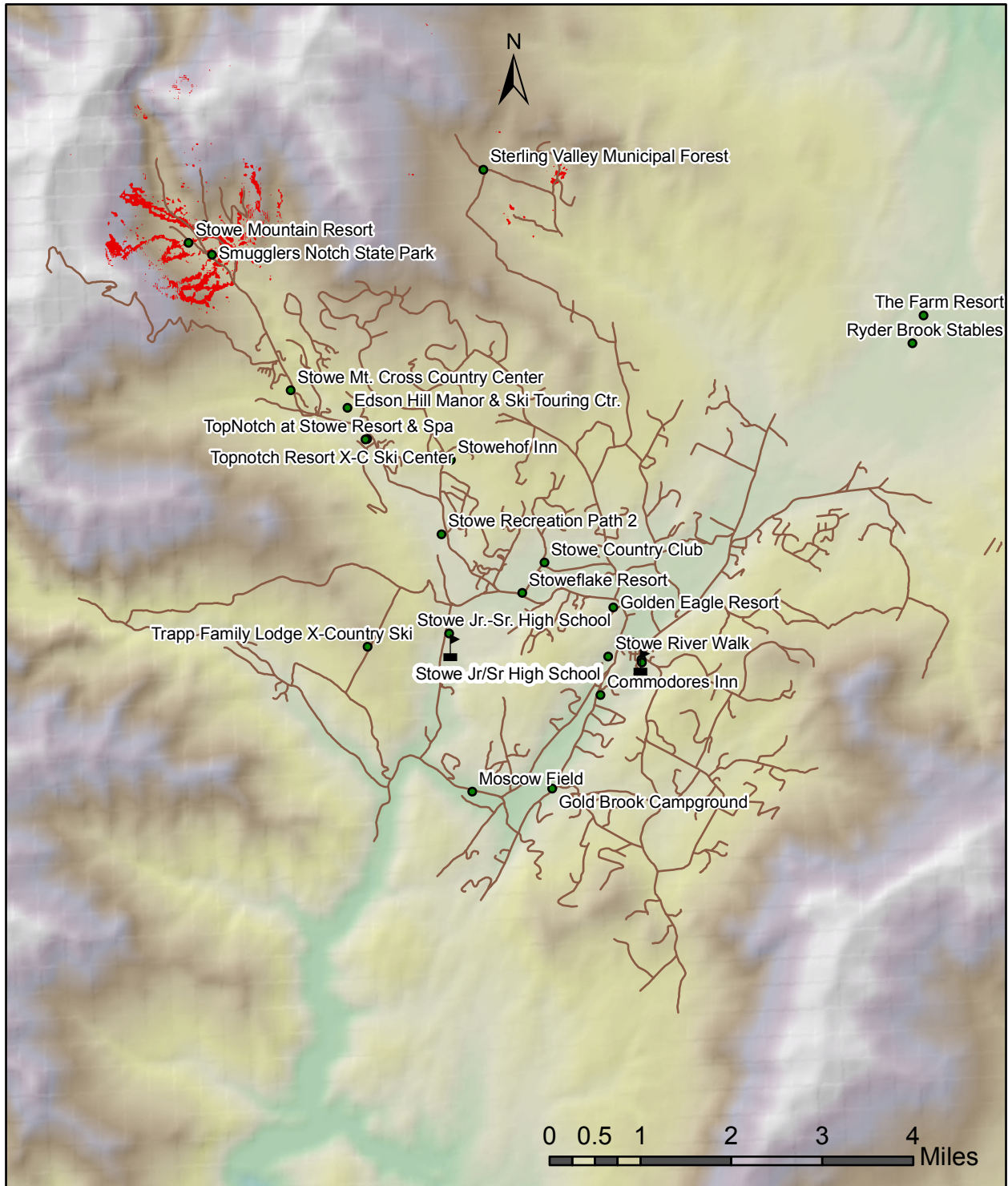


# Results of New School Site Suitability Analysis



## Legend

-  Existing schools
-  Recreational sites
-  Roads
-  Areas suitable for new school site

by Dmitriy Tarasov

Source:  
 ESRI Data and Maps [DVD]. (2010) Redlands, CA: ESRI, Inc. [October, 2011].  
 Coordinate system: NAD 1983 State Plane Vermont FIPS 4400 (meters)